

# Four Mile Reserve

Draft Concept Report



In conjunction with

**Hassell**



# Concept Statement

Moir Studio are working with Brewarrina Shire Council to upgrade Four Mile Reserve, as part of a larger place-making masterplan.

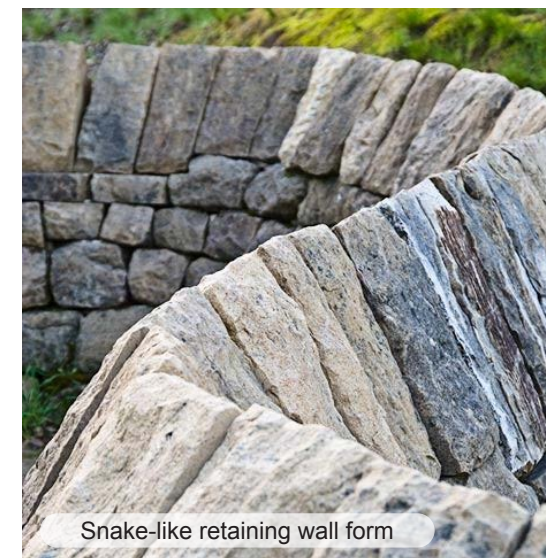
The reserve is currently used by local and non-local users throughout the year. User activities include camping, fishing and boating, with hopes that the new upgrade will attract more people to this unique and beautiful landscape. The upgrade will see new toilet, shower and changeroom facilities, a flexible lawn area, formalised car parking and wayfinding, and a stabilised river bank, improving ease of access to the river's edge.

During conversations with community members, we were told anecdotally the story of the Rainbow Serpent, Wawei. In this story, the serpent travels across the landscape colouring the world with the vibrancy and textures we know today. Afterwards, it was here, at this bend in the Pawaan (Barwon) River where the water reaches it's deepest depth, that the Rainbow Serpent came to rest.

It is the cultural significance of this place; its proximity to the creative spirit Wawei, the depth and stillness of the river, and the dynamic flow of water that has been, and continues to be, the lifeblood of the community that makes this place so special.

The design concept for the upgraded Four Mile Reserve should reflect the visual and tactile elements of this creation story and provide the community with formalised spaces and facilities to strengthen their connections with the Pawaan River landscape.

We achieve this through the use of shifting colours, organic winding forms and use of local materials. This is a place built for and by the community; utilising simple construction methods that can be easily undertaken by the Brewarrina Shire Council and community members. This will ensure a sense of empowerment, ownership, improved maintenance and longevity for this moving into the future.





# Day Use Activation

## Cultural activities

From in-person meetings with representatives from the Brewarrina Local Aboriginal Land Council (LALC), the need for a flexible cultural space was identified to facilitate locally run cultural dance and language workshops. The space should be large enough to host small and large-scale events, with the suggestion the space could host large corroborees throughout the year. The cultural space should include seating areas with strong visual ties to the river.

## Amenities

The current amenities at the Reserve include toilets and showers. These facilities however are dated and require improvement. The project presents an opportunity for an amenities upgrade to better serve the space and users.

## Fishing

Brewarrina is known for fishing and is a key tourism drawcard for the area. Creating better opportunities for boat access and land-based fishing will increase visitation.

## Access

The current access to the reserve is via a sealed road off Tarrion Yarrowin Road. The road access within the reserve is in disrepair, with numerous potholes and unsealed edges. Additionally, many informal access paths have been made, and wayfinding through the site is unclear. Formalising the access road will help users navigate the Reserve and introduce a safe and defined separation between vehicles and pedestrians.

## Camping

Four Mile Reserve is a popular camping location for caravaners and campers alike. The projects present opportunities to enhance the camping experience through intuitive wayfinding and amenity upgrades.



Cultural event space



Fishing



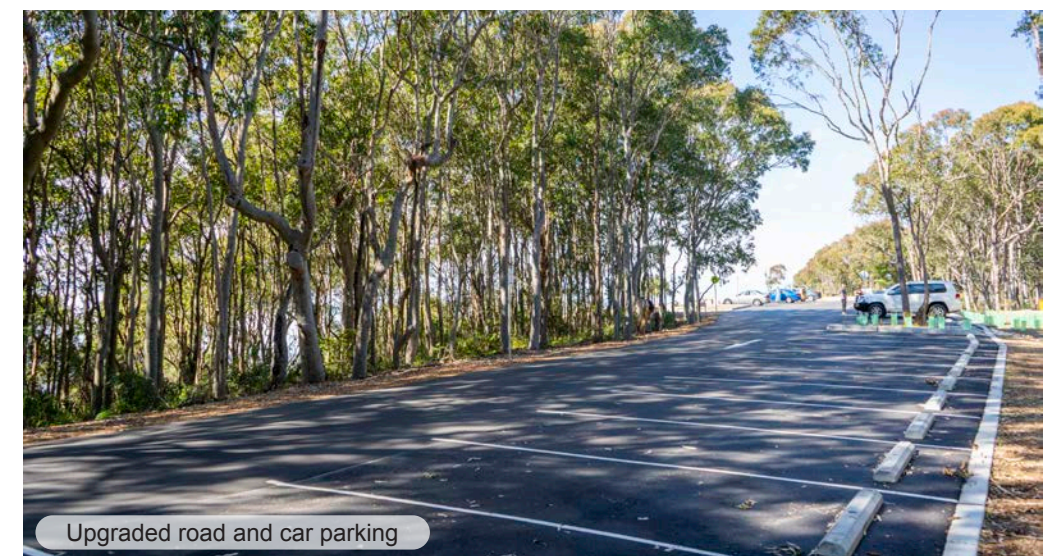
Camping



Boating



New amenities building



Upgraded road and car parking



# Materials and Skills

## Materiality

The design will look to leverage the area's local resources to reduce import and transportation costs as well as celebrate the area's natural resources and contribute to the existing sense of place.

Through our discussions with Brewarrina Council, there is opportunity to leverage off the existing quarry stockpile to establish granite as a key material type for the project. Natural rock has the potential to be used as:

- Gabion walls to facilitate retaining walls, signage walls and other built form elements.
- Bollard devices to help establish legibility and wayfinding.
- Bank stabilisation
- Feature markers in the landscape

Being prone to flood conditions, the design will look to utilise fit-for-purpose materials that are underpinned by robustness and longevity, as well as sustainability. Elements steel and fibre reinforced polymer (FRP), will be utilised over materials such as soft and hardwood timbers to facilitate pedestrian movement and used in structural elements. Limiting the material palette will help to create a strong identity for the space that celebrates its unique natural setting.

## Skillsets

Moir Studio recognises the challenges involved in the tender and construction process within rural communities. Therefore, the design will aim to leverage local skills and construction methods familiar to the area. This approach not only has the potential to boost the local economy but also allows for the possibility of construction of the project to be led and undertaken by the Brewarrina Council Team. This approach will instil stewardship and ownership over the project, and lead to a better outcome.

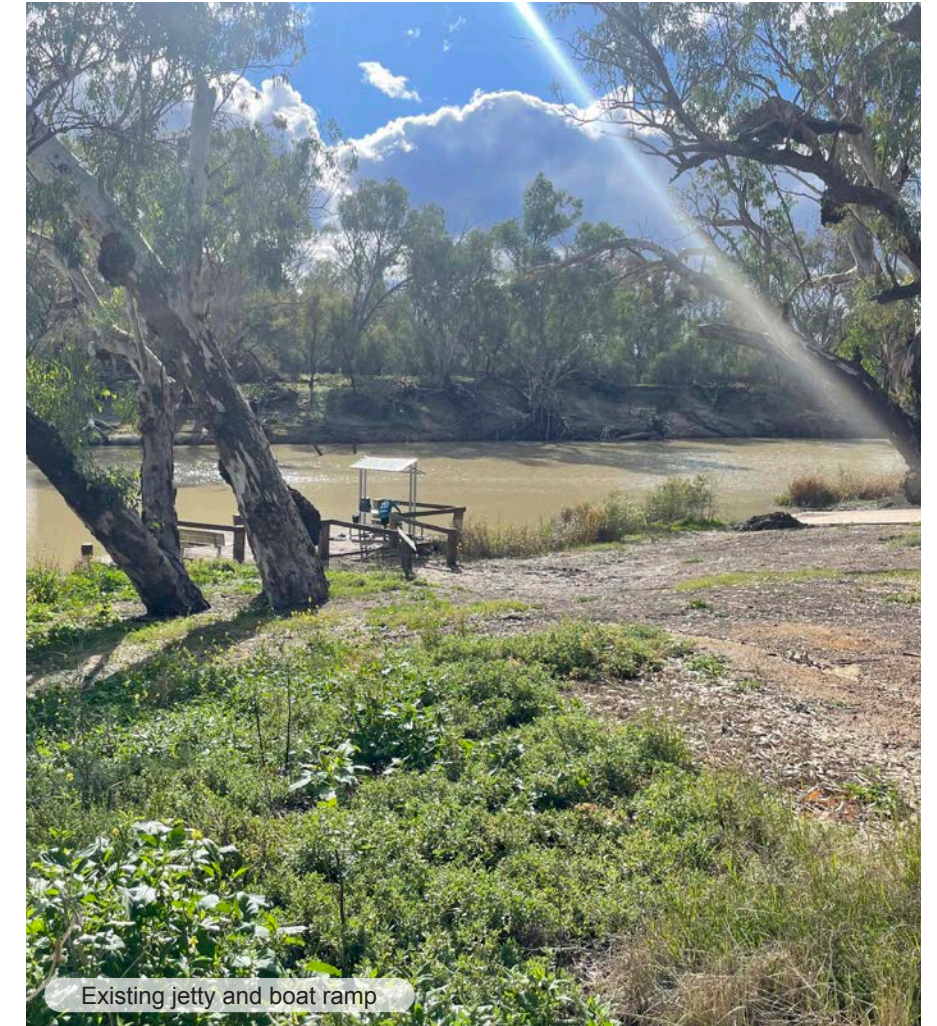
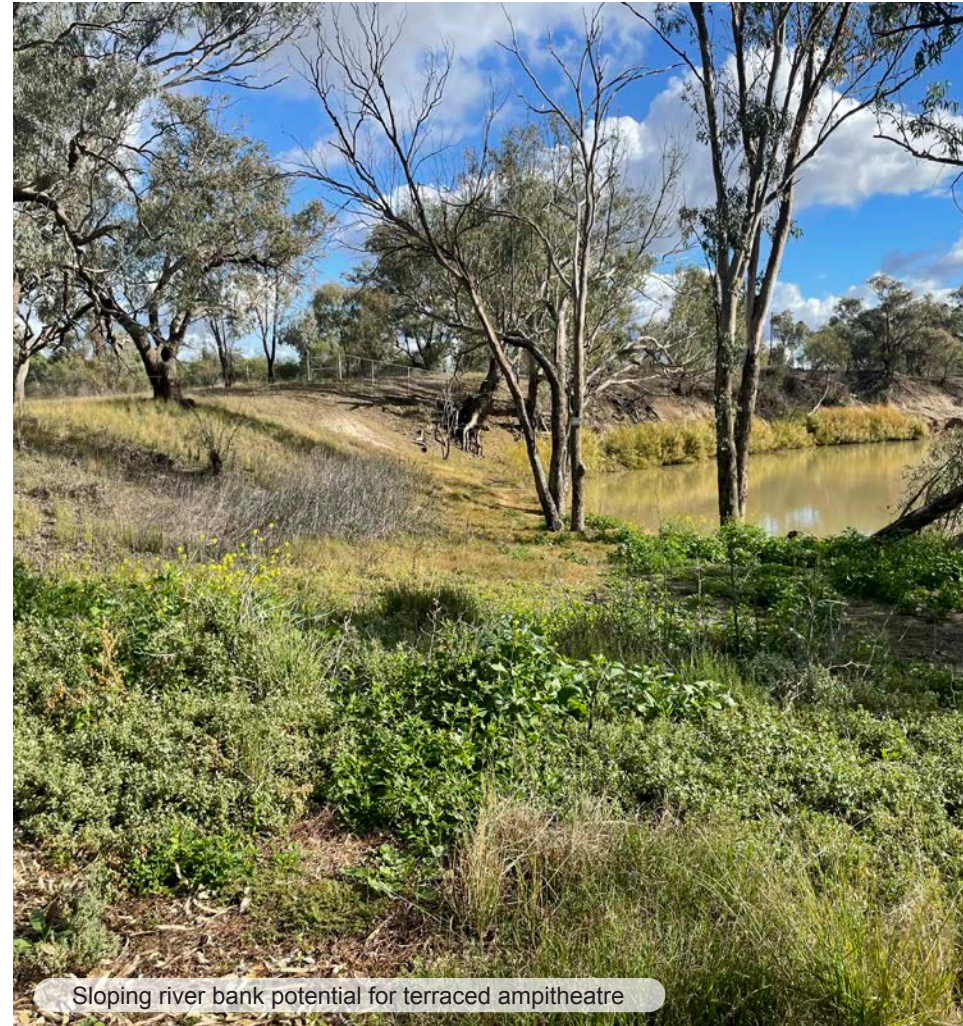




# Site Conditions

The existing Four Mile Reserve is a popular free campground situated on the southern bank of the Barwon River, east of Brewarrina, that is easily accessed by sealed road. The land is relatively flat, sandy and hosts strands of mature River Red Gums.

Current facilities include toilets, cold showers, open fire barbeques, a jetty and a boat ramp.





# Flood Consideration

Four Mile Reserve and the surrounding low-lying areas are prone to flooding from the Barwon River. The max flood level on the site is unknown, but the design should consider the placement of built-form elements such as amenity buildings to ensure they are located in areas less susceptible to flooding.

— Known flood level  
Please note: flooding may exceed this line





# Concept Master Plan





# Amenities and Shelter

The current amenities within the reserve are quite dated and in need of replacement.

The design proposes to consolidate the amenities into one building and move their location further south, reducing its risk of inundation in times of flooding. As shown on the plan, a nominal-sized space has been allocated for the new amenities. Further discussion with Council is needed to understand the operational requirements.

In keeping with the proposed material palette of the reserve, Gabion walls will be explored for the structure of the amenities building, with a simple and lightweight roof structure. In its location at the entry to the reserve, it offers an opportunity to help create a unique arrival experience and can be largely constructed by local skillsets.

In addition, the solid nature on amenities building offers the opportunity to be playful and innovative with the way in which rock can be stacked within the gabion cages to create different effects, or tell different stories. Please see reference imagery right.





# Cultural Space and Terracing

The design aims to feature a performance space encircled by a sloped and terraced landscape. This performance area will accommodate both small and large gatherings and will also serve as the stabilised shoreline for easy access to the river bank. The terracing will be constructed using gabion retaining walls filled with locally sourced rock, and the terraces will be made of decomposed granite, providing seating close to the water's edge. The performance space will be strategically positioned to take advantage of the existing contours, minimising on-site excavation and reducing the impact on structural root zones.



Natural stone variations in gabion wall



Custom furniture elements



Snaking gabion retaining wall



Gabion wall acts as barrier in times of flooding



## Water Activation

The proposed floating pontoon jetty will serve all river users. Positioned parallel to the boat ramp, it allows boaters to tie up while parking or reversing their trailers. On the eastern side, the pontoon will create a calm zone with a stabilised bank for easy access to the Barwon River. The jetty will extend into the deeper parts of the river, offering users the opportunity to explore these areas. Anchored by two pylons, the pontoon can be swiftly detached during floods to prevent damage.

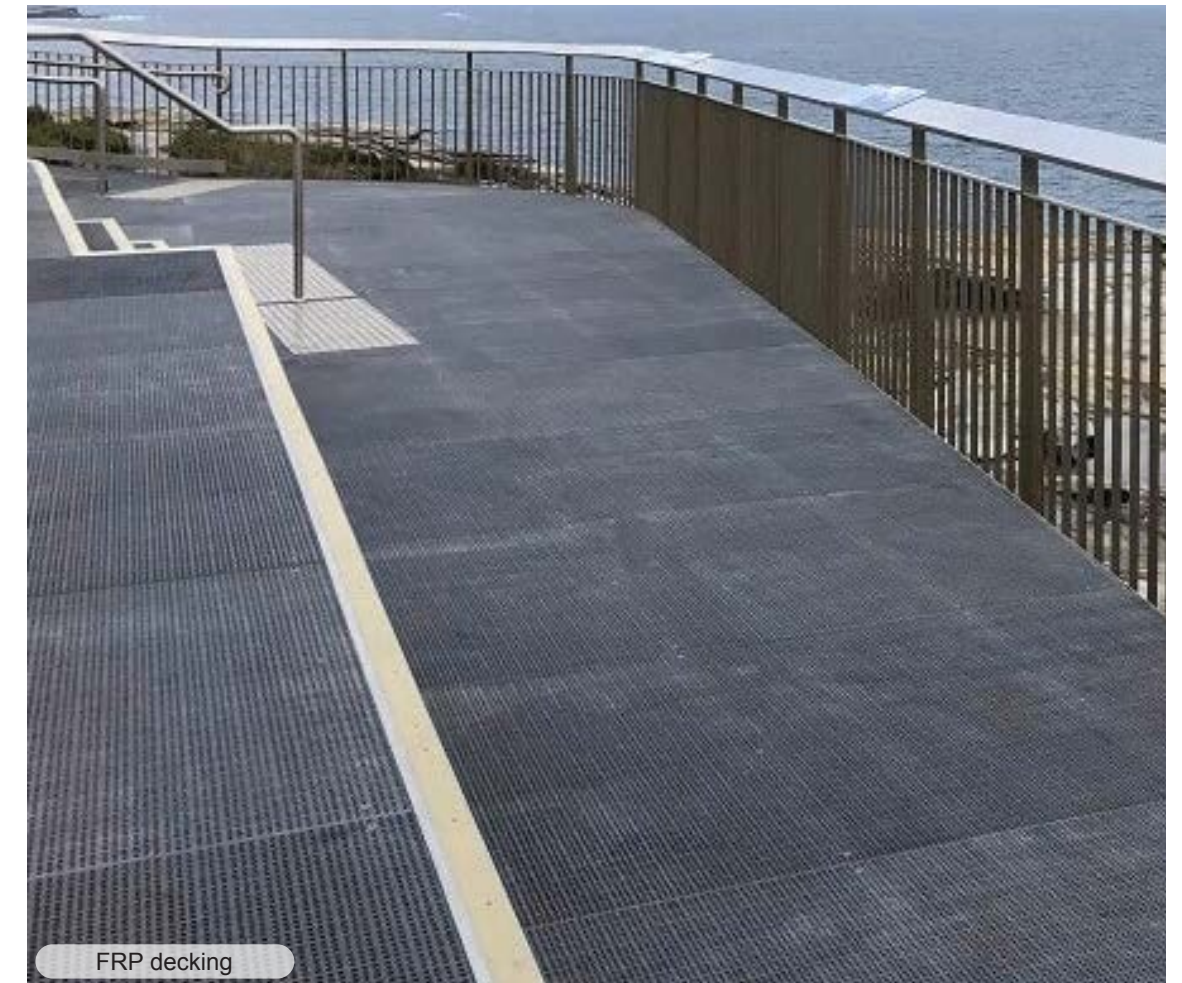




# User Movement

The design aims to address existing level changes by incorporating fibre-reinforced polymer (FRP) boardwalks, ramps, and stairs. FRP decking, a lightweight material often used in inundation-prone areas, will be utilised alongside concrete footpaths to enhance pedestrian movement throughout the day-use area.

The existing turning bay is maintained to allow flow of vehicles, space for trailer operation up and down the boat ramp, with additional rock bollards to prevent off-road driving and improve pedestrian safety and wayfinding.





# Perspective A - Aerial view of entry

New amenities building

Entry gabion wall

New BBQ area

Turning circle

Bollards

Boat trailer parking

Gravel car parking





# Perspective B - Aerial view of car parking

New amenities building

Elevated platform

Gabion wall

Gravel car parking

New barbeque area

Boat ramp

Bollards

Turning circle





# Perspective C - View from elevated platform

Boat ramp

Concrete pathways

Barbeque area

Boat trailer parking

Gabion retaining wall

FRP decking

Car parking





# Perspective D - View towards new barbeque facilities





# Perspective E - Shelter Shadow at 9am in Summer

Open section of shelter allows for debris to fall through

Shelter angled down facing the river to frame the view and control shadows during the hottest months

All picnic benches remain shaded during this time of the day

Battens to eastern face manage morning shadows into shelter





# Perspective F - Shelter Shadow at 3pm in Summer

Open section of shelter allows for debris to fall through

Shelter angled down facing the river to frame the view and control shadows during the hottest months

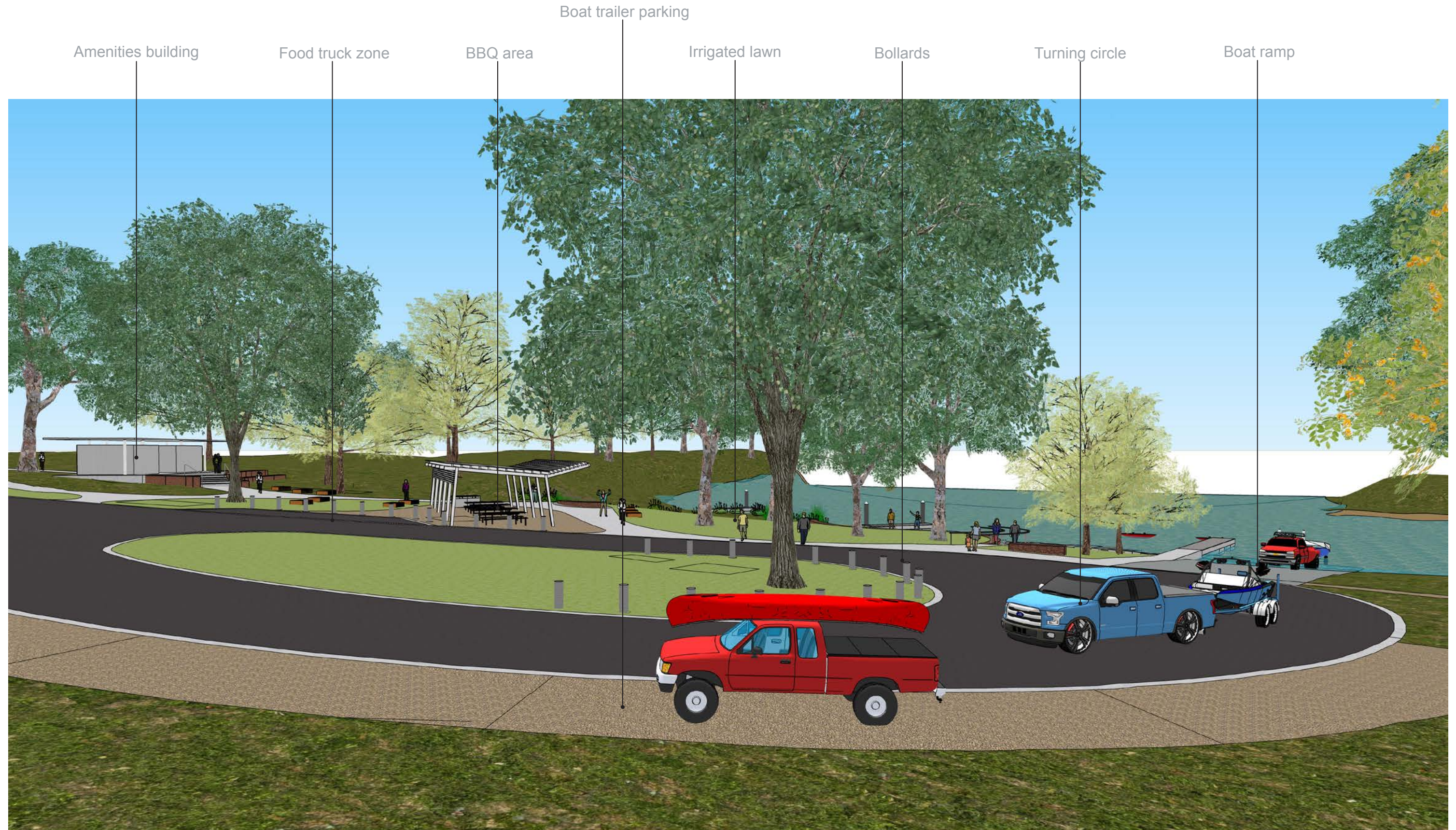
All picnic benches remain shaded during this time of the day

Battens to eastern face manage morning shadows into shelter



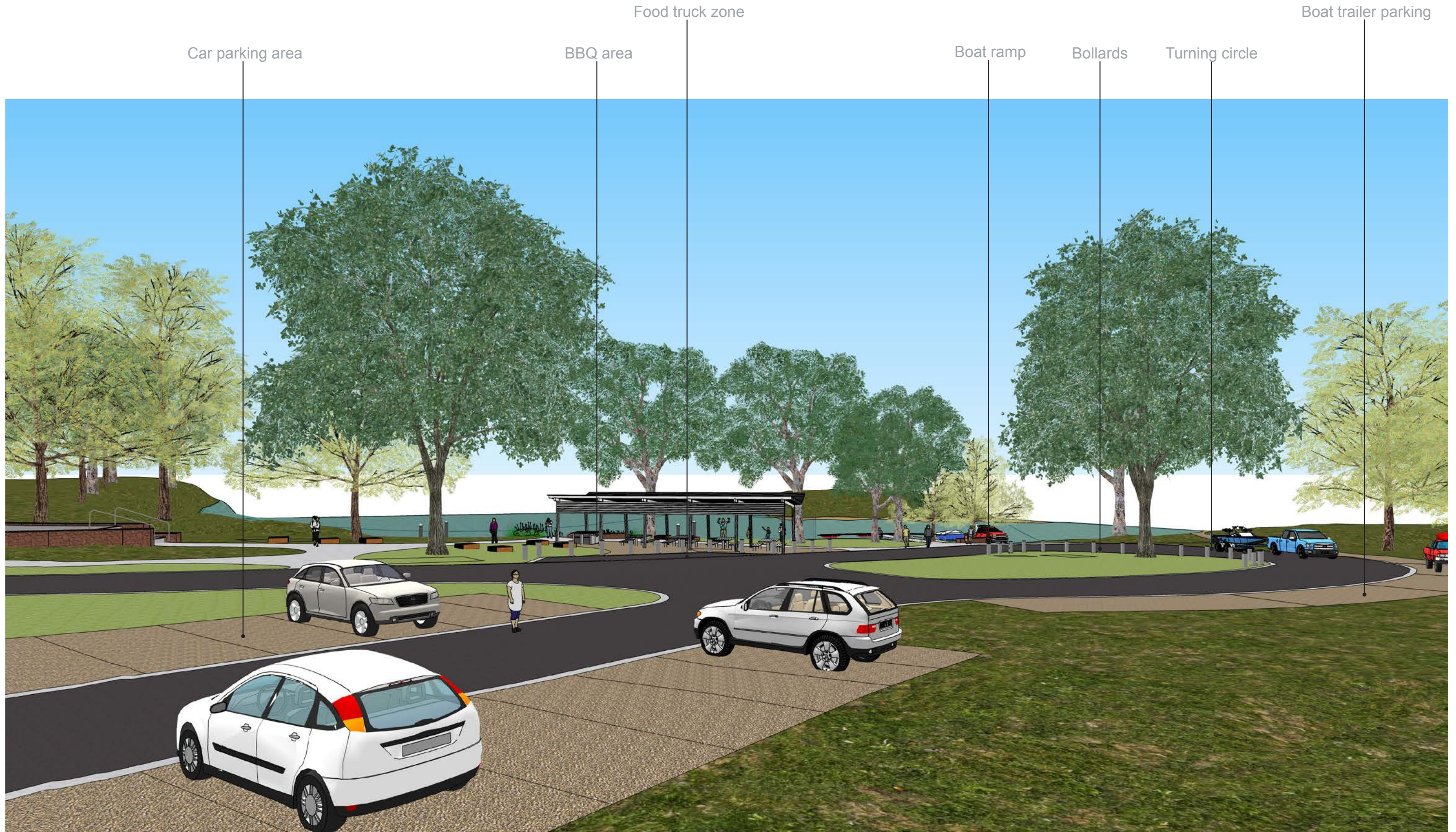


# Perspective G - View towards boat ramp and boat trailer parking





# Perspective H - View towards car parking area





# Perspective I - View of elevated platform towards BBQ facilities

Gabion wall

Elevated platform

Timber seating elements

BBQ area with shelter

Concrete footpaths

Food truck zone





# Perspective J - View towards BBQ facilities

Timber seating elements

Concrete footpaths

BBQ area with shelter

Timber seating elements

Food truck zone

Access to boat ramp

Bollards





# Perspective K - View of boat ramp and river edge





# Perspective L - View of boat ramp and river edge flooding





# Perspective M - View of floating pontoon and stabilised river bank edge

- Boat ramp
- Accessible ramp
- Stabilised river bank edge
- Floating pontoon
- Gabion wall
- Irrigated lawn
- BBQ area with shelter
- Existing landscape to be maintained





# Perspective N - View of floating pontoon and stabilised river bank edge flooding

- Boat ramp
- Accessible ramp
- Stabilised river bank edge
- Floating pontoon
- Gabion wall
- Irrigated lawn
- BBQ area with shelter
- Existing landscape to be maintained

