

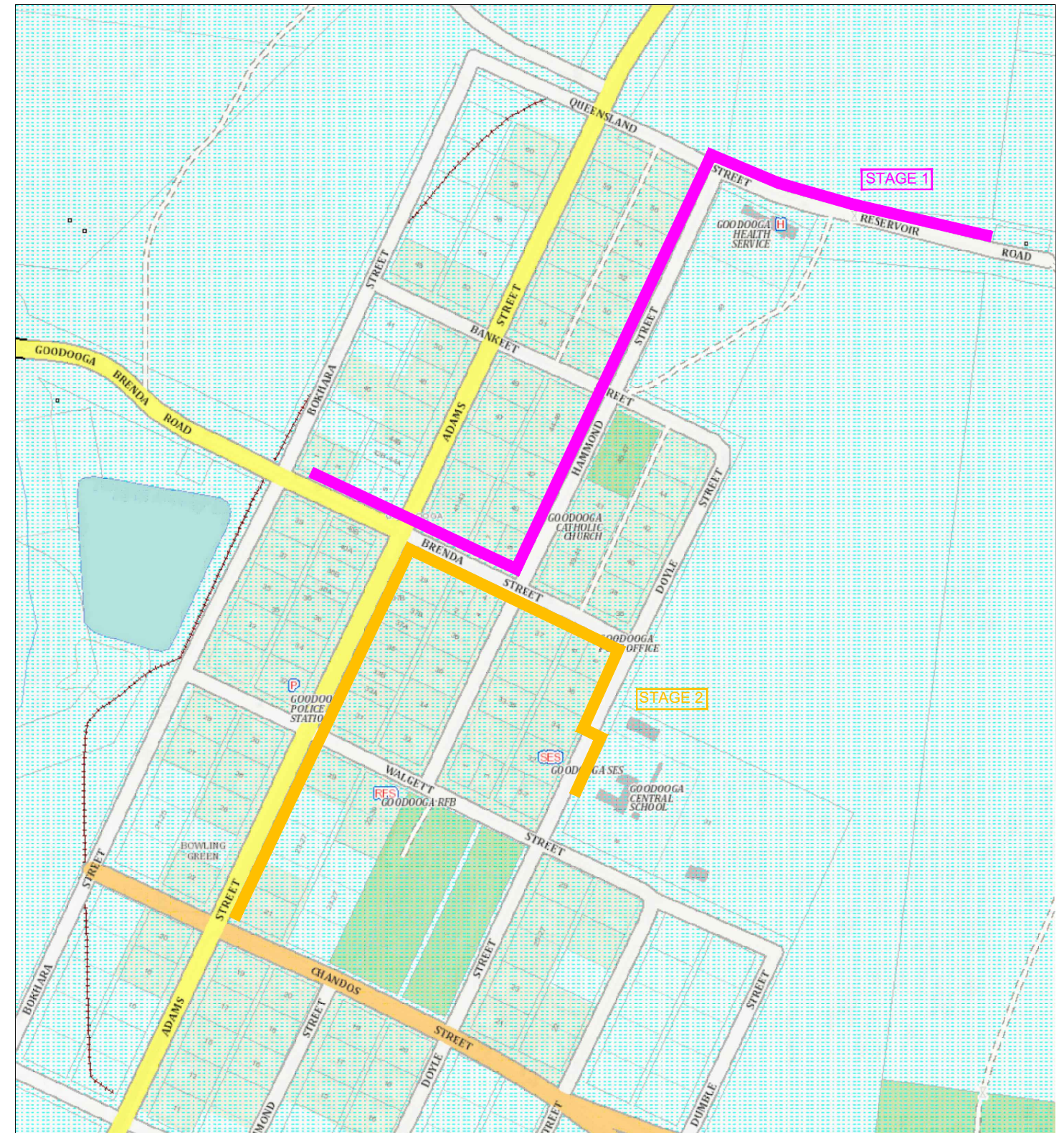
PROPOSED CIVIL WORKS

PROJECT
2.4m WIDE SHARED PATH

LOCATION
GOODDOOGA TOWNSHIP,
SHARED PATH

INDEX

DRAWING No.	DRAWING TITLE	REV
GD00	COVER SHEET, INDEX & SITE PLAN	A
GD01	GENERAL LAYOUT PLAN	A
GD02	LAYOUT PLAN - SHEET 1	A
GD03	LAYOUT PLAN - SHEET 2	A
GD04	LAYOUT PLAN - SHEET 3	A
GD05	LAYOUT PLAN - SHEET 4	A
GD06	PATH CONSTRUCTION DETAILS	A



LOCATION MAP

ISSUED FOR INFORMATION

REV	DESCRIPTION	AS BY	10/24 DATE	DK APP
A	DRAFT - FOR REVIEW			

PROJECT TITLE
GOODDOOGA SHARED PATH

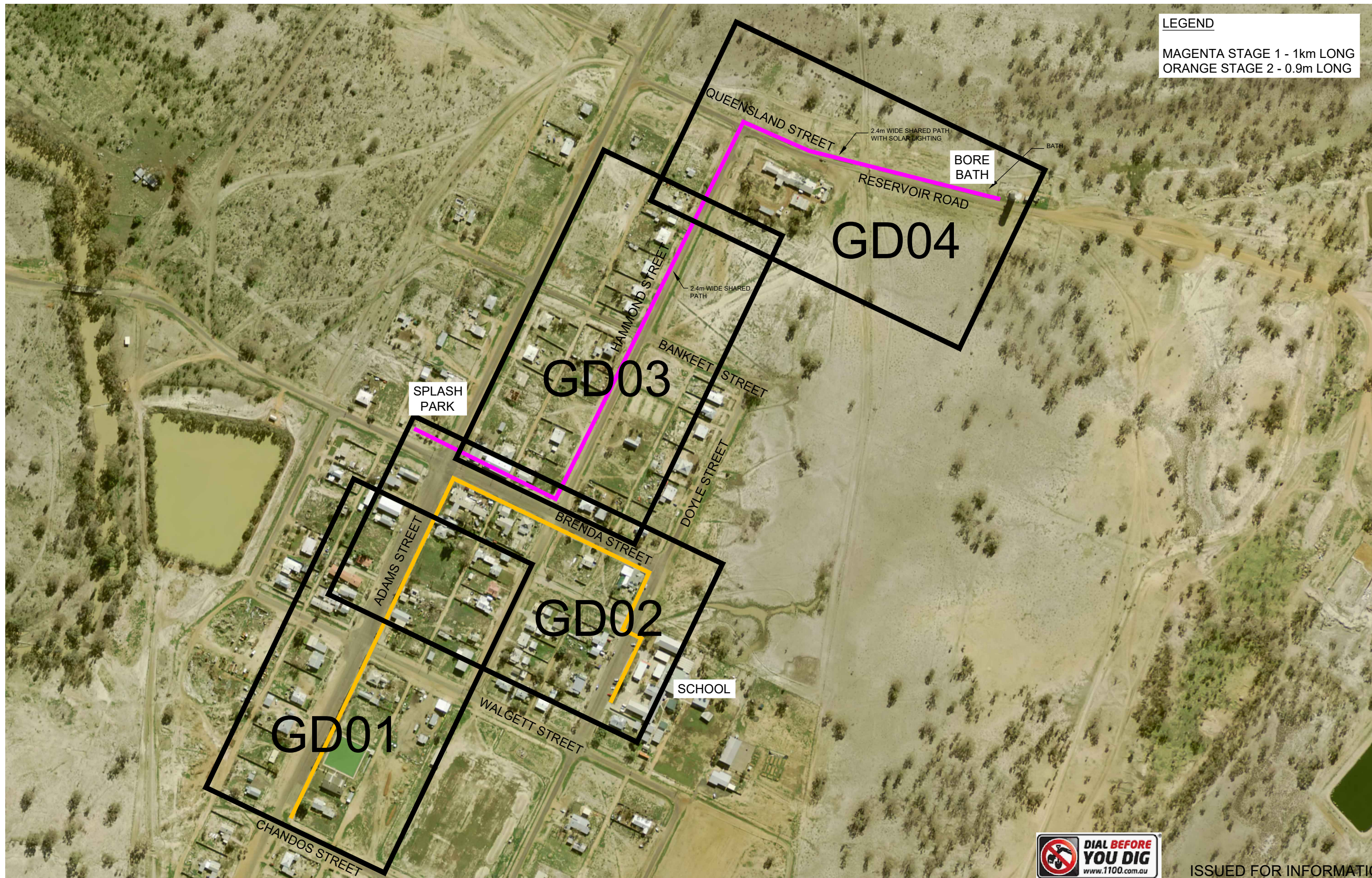
SHEET TITLE
COVER, INDEX & SITE PLAN



BREWARRINA SHIRE COUNCIL
57 BATHURST STREET,
BREWARRINA
PH: 02 6830 5100
E: breshire@brewarrina.nsw.gov.au
NSW 2839

DESIGNED BY	AS	SHEET No.	REV
CHECKED BY	AS	GD00	
APPROVED & SIGNED	DAVID KIRBY		A

LEGEND
 MAGENTA STAGE 1 - 1km LONG
 ORANGE STAGE 2 - 0.9m LONG



ISSUED FOR INFORMATION

REV	DESCRIPTION	BY	DATE	APP
A	DRAFT - FOR REVIEW	AS	10/24	DK

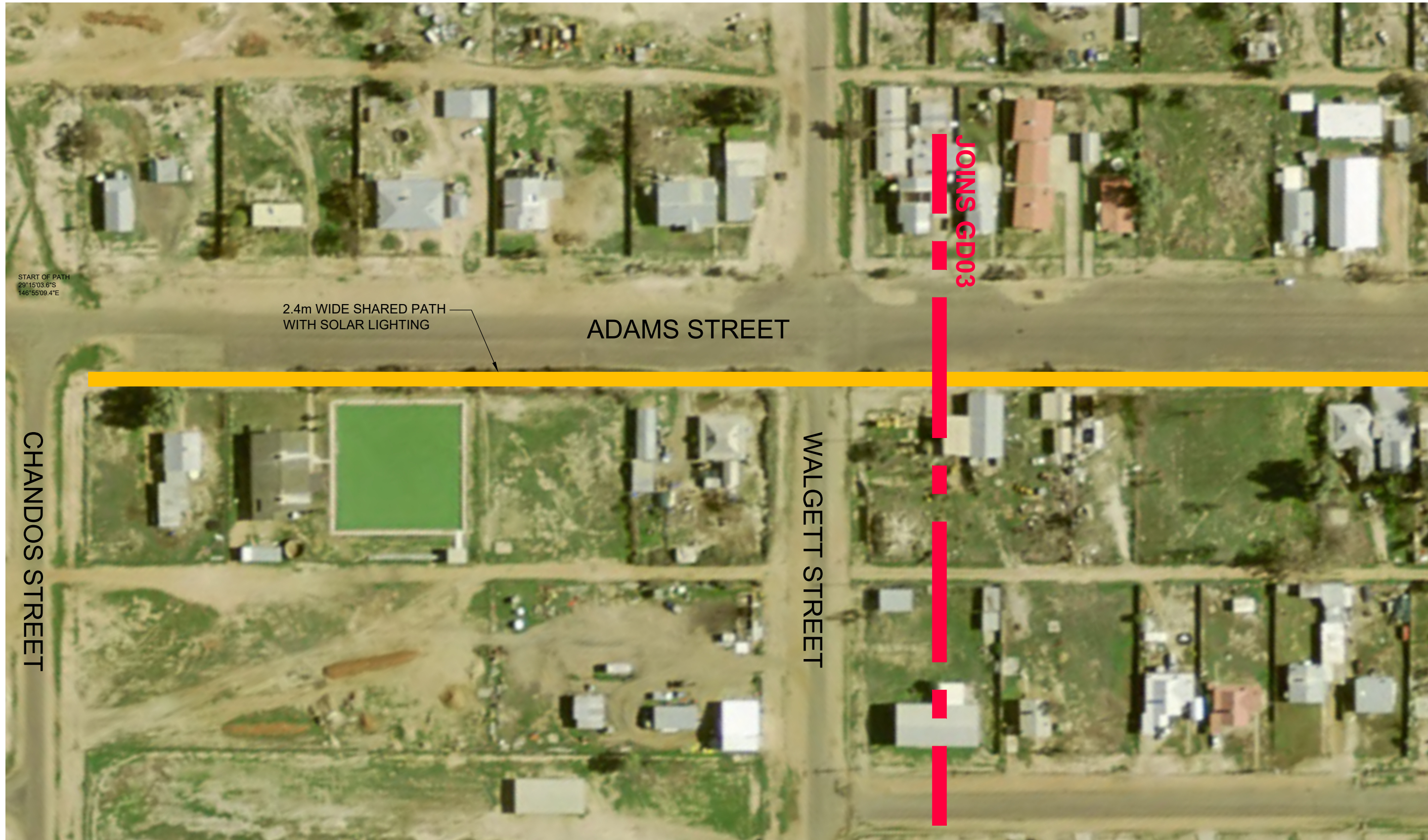
PROJECT TITLE
GOODOOGA SHARED PATH

SHEET TITLE
GENERAL LAYOUT PLAN



BREWARRINA SHIRE COUNCIL
 57 BATHURST STREET,
 BREWARRINA
 PH: 02 6830 5100
 E: breshire@brewarrina.nsw.gov.au
 NSW 2839

DESIGNED BY	AS	SHEET No.	REV
CHECKED BY	AS	GD01	
APPROVED & SIGNED	DAVID KIRBY		A



ISSUED FOR INFORMATION

REV	DESCRIPTION	BY	DATE	APP
A	DRAFT - FOR REVIEW	AS	10/24	DK

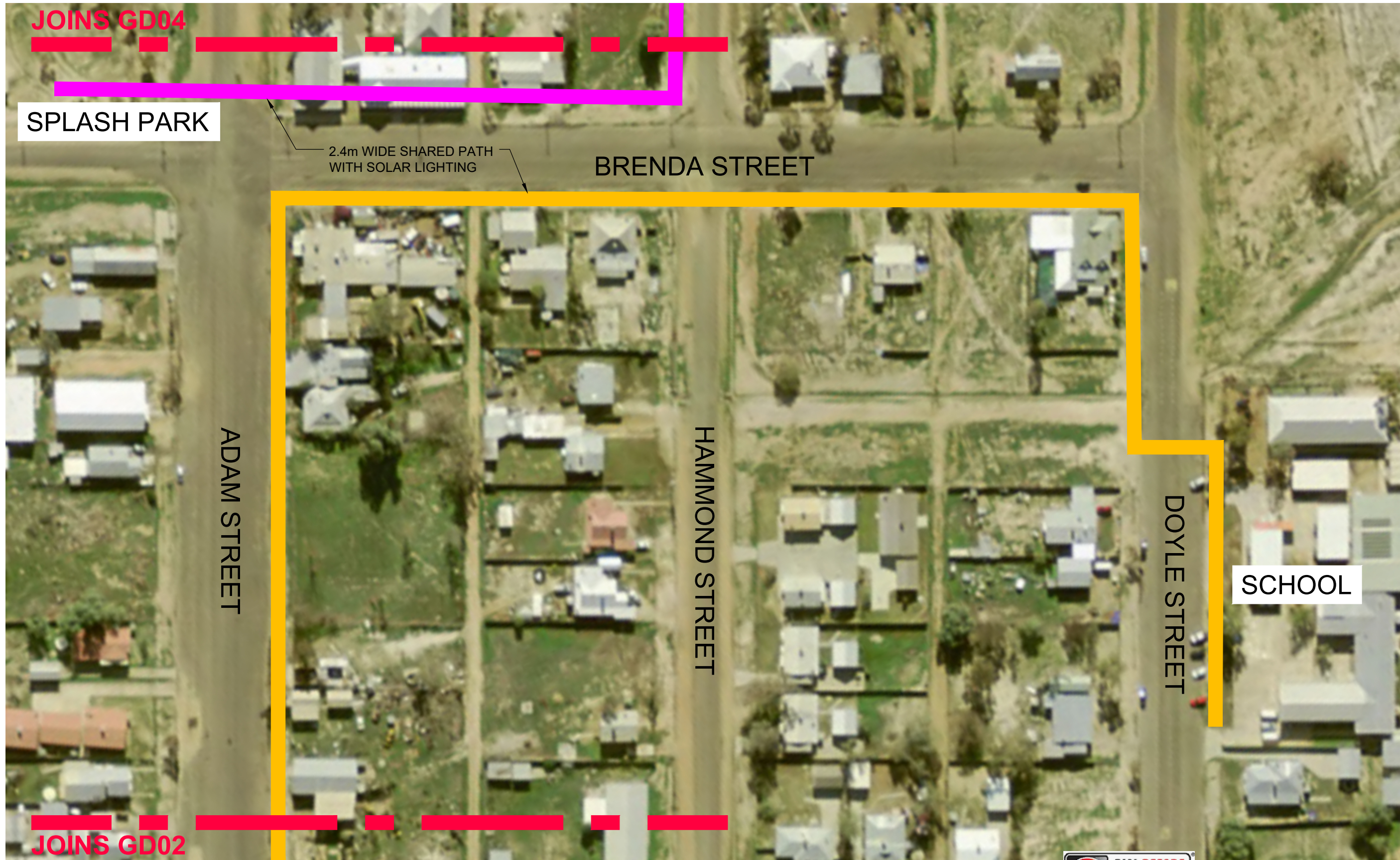
PROJECT TITLE
GOODDOGA SHARED PATH

SHEET TITLE
LAYOUT PLAN - SHEET 1



BREWARRINA SHIRE COUNCIL
57 BATHURST STREET,
BREWARRINA
PH: 02 6830 5100
E: breshire@brewarrina.nsw.gov.au
NSW 2839

DESIGNED BY	AS	SHEET No.	REV A
CHECKED BY	AS	GD02	
APPROVED & SIGNED		DAVID KIRBY	



ISSUED FOR INFORMATION

REV	DESCRIPTION	BY	DATE	APP
A	DRAFT - FOR REVIEW	AS	10/24	DK

PROJECT TITLE
GOODDOOGA SHARED PATH

SHEET TITLE
LAYOUT PLAN - SHEET 2



BREWARRINA SHIRE COUNCIL
 57 BATHURST STREET,
 BREWARRINA
 PH: 02 6830 5100
 E: breshire@brewarrina.nsw.gov.au
 NSW 2839

DESIGNED BY	AS	SHEET No.	REV
CHECKED BY	AS	GD03	
APPROVED & SIGNED	DAVID KIRBY		A



ISSUED FOR INFORMATION

REV	DESCRIPTION	BY	DATE	APP
A	DRAFT - FOR REVIEW	AS	10/24	DK

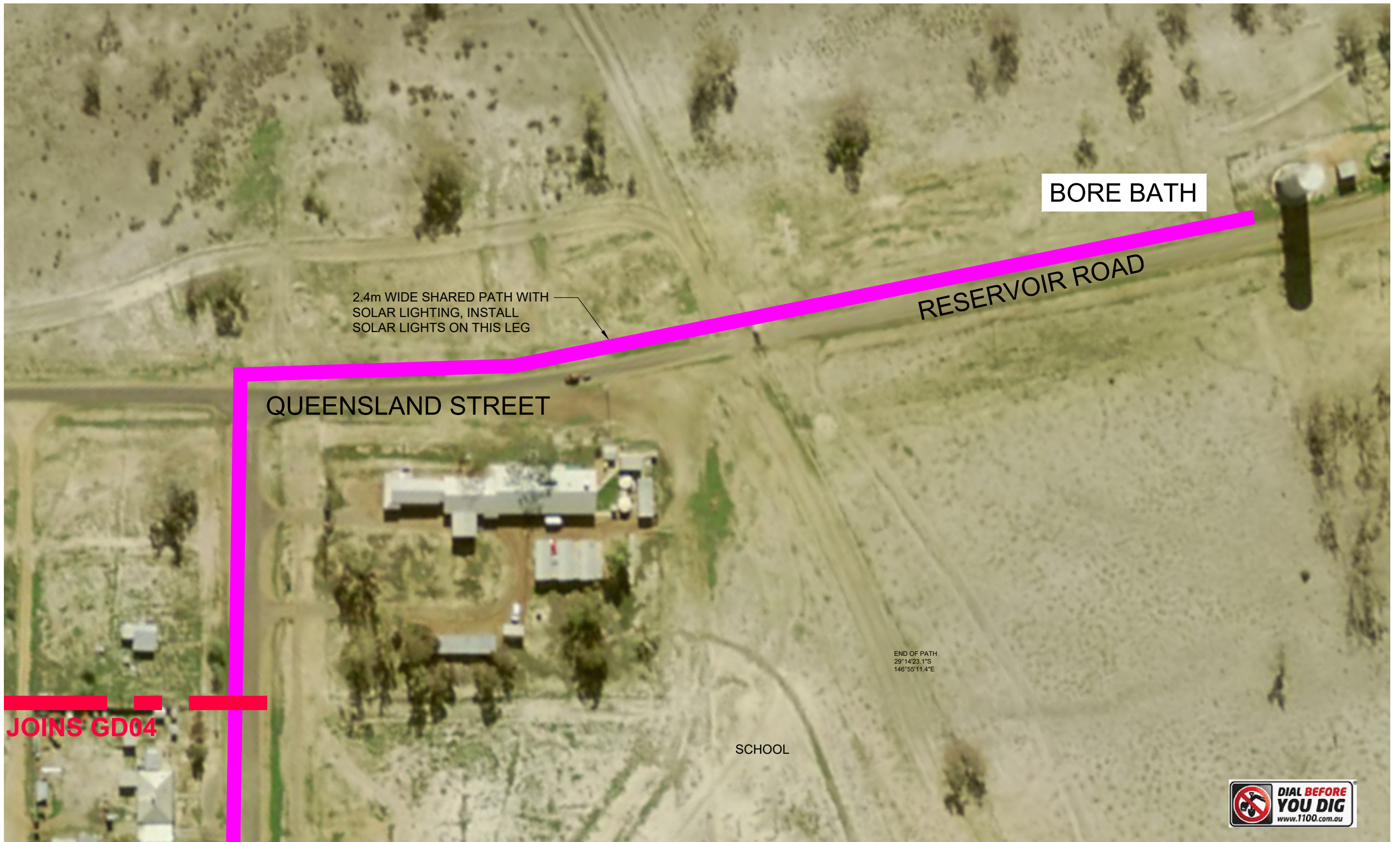
PROJECT TITLE
GOODDOGA SHARED PATH

SHEET TITLE
LAYOUT PLAN - SHEET 3



BREWARRINA SHIRE COUNCIL
 57 BATHURST STREET,
 BREWARRINA
 PH: 02 6830 5100
 E: breshire@brewarrina.nsw.gov.au
 NSW 2839

DESIGNED BY	AS	SHEET No.	REV A
CHECKED BY	AS	GD04	
APPROVED & SIGNED	DAVID KIRBY		



ISSUED FOR INFORMATION

REV	DESCRIPTION	BY	DATE	APP
A	DRAFT - FOR REVIEW	AS	10/24	DK

PROJECT TITLE
GOODDOOGA SHARED PATH

SHEET TITLE
LAYOUT PLAN - SHEET 4



BREWARRINA SHIRE COUNCIL
57 BATHURST STREET,
BREWARRINA
PH: 02 6830 5100
E: breshire@brewarrina.nsw.gov.au
NSW 2839

DESIGNED BY	AS	SHEET No.	REV A
CHECKED BY	AS	GD05	
APPROVED & SIGNED	DAVID KIRBY		

CYCLEWAY NOTES

1. CONCRETE STRENGTH

- A) KERB, KERB & GUTTER, FOOTPATH, CYCLEWAY, VEHICLE CROSSING, PRAM RAMP, EDGE STRIP: 25MPa @ 28 DAYS
- B) FOR TRAFFICED AREAS WHERE FACILITY MUST BE OPEN TO TRAFFIC WITHIN 12 HOURS (EG VEHICLE CROSSING, ROAD SLAB, DISH CROSSING, ROAD PLATFORM/HUMP: 40 MPA WITH ACCELERATOR SUCH AS 2% CACL (REFER TO SP40HC).
- C) FOR COLOURED OR DECORATIVE CONCRETE FINISHES A MINIMUM OF 32-MPA CONCRETE SHOULD BE USED FOR ALL TRAFFIC

2. CONCRETE FINISH

- A) VEHICLE CROSSINGS, FOOTPATH, CYCLEWAY, ROAD SLABS, PRAM RAMP, ROAD HUMPS/RAMPS - BROOM/BRUSH.

B) REINFORCEMENT

- A) TO AS 4671
- B) MINIMUM COVER: 50MM

4. JOINTING, MINIMUM DIMENSIONS, AND REINFORCEMENT

- A) ANY RECONSTRUCTED SECTION OF CONCRETE SHALL HAVE A MINIMUM DIMENSION OF 900MM IN ANY DIRECTION.
- B) ALL JOINTS SHALL BE AT RIGHT ANGLES UNLESS DIRECTED OTHERWISE BY THE COUNCIL ENGINEER.
- C) EXPANSION JOINTS (REINFORCED CONCRETE): 10MM APPROVED BITUMEN FILLER AT 12M INTERVALS, WITH 12MM DIA DEFORMED HOT DIPPED GALVANISED DOWELS, 600MM LONG, AT 500MM CENTRES WITH UPVC SLEEVE AND LEG - MINIMUM 2 DOWELS/JOINT, WITH NO DOWEL CLOSER THAN 150MM TO A VERTICAL EDGE. 'CONNELLY' JOINTS OR EQUIVALENT MAY BE USED. ALL DOWELS SHALL BE PERFECTLY ALIGNED IN PLAN VIEW AND IN ELEVATION, IE THE DOWELS SHALL NOT BE SPLAYED RELEVANT TO EACH OTHER.
- D) ALL EXPANSION JOINT MATERIAL SHALL BE THE SAME THICKNESS OF THE CONCRETE AND BE IN ONE LENGTH & WIDTH.
- E) AT ALL EXPANSION JOINTS, ANY 'SPILL' CONCRETE FROM THE PREVIOUS POUR (IE SEPARATE TO THE FINISHED CONCRETE) SHALL BE REMOVED.
- F) CONTRACTION/DUMMY JOINTS (UNREINFORCED CONCRETE) - NOMINALLY AT 3M INTERVALS OR EQUALLY BETWEEN EXPANSION JOINTS BUT NOT LESS THAN THE CONCRETE WIDTH BETWEEN JOINTS/EDGES.

5. KERB RAMPS

- A) SEE STANDARD PLAN F4.
- B) AT SIGNALISED CROSSINGS, THE RAMP SHALL BE NO MORE THAN 600MM FROM THE SIGNAL PUSH BUTTON.
- C) ALL KERB RAMPS SHALL ALIGN WITH RAMPS ON THE OPPOSITE SIDE OF THE ROAD AND AT ANY CENTRAL TRAFFIC ISLAND.
- D) AT KERB RETURNS, SEPARATE KERB RAMPS SHALL BE PROVIDED FOR EACH DIRECTION OF PEDESTRIAN TRAVEL, EXCEPT WHERE DIRECTED BY THE COUNCIL ENGINEER.

6. EXCAVATION

- A) AT ALL JOINTS TO EXISTING CONCRETE/ASPHALT - THE JOIN SHALL BE SAW CUT BEFORE EXCAVATION.
- B) ALL EXCAVATED MATERIAL SHALL BE REMOVED FROM THE SITE AND DISPOSED OF AT A LICENSED WASTE DISPOSAL FACILITY.

7. ROAD BASE

- A) COMPACTION: 95% STANDARD.
- B) RECYCLED DGB SPECIFICATION: FOR SUPPLY OF RECYCLED MATERIAL FOR PAVEMENTS, EARTHWORKS, AND DRAINAGE REFER TO SPECIFICATION FOR SUPPLY OF RECYCLED MATERIAL FOR PAVEMENTS, EARTHWORKS AND DRAINAGE' BY IPWEA (NSW) (LATEST EDITION).

8. RESTORATION OF ADJOINING ROAD PAVEMENT

- A) SHALL BE CARRIED OUT WITH FULL DEPTH AC20 AND AC10, WITH THE SURFACE FINISH BEING WITH AC10 (MINIMUM THICKNESS 30MM).
- B) AC TO RMS SPECIFICATION: R116.

9. UTILITIES, SERVICES & SURVEY MARKS

- A) ALL UNDERGROUND UTILITY SERVICES SHALL BE CHECKED FOR LEVEL AND LOCATION PRIOR TO COMMENCEMENT OF WORKS, BY THE CONTRACTOR.
- B) ALL SERVICE COVERS AFFECTED BY THE WORKS SHALL BE ADJUSTED AS REQUIRED AND TO SUIT THE LEVELS OF THE NEW WORK. NO SERVICE FITTINGS SHALL BE COVERED.
- C) PROPERTY STORMWATER PIPES: WHERE AFFECTED, SHALL BE REPLACED WITH 90MM UPVC OR TO SUIT EXISTING AND INVERT SHALL MATCH THE GUTTER LEVEL.
- D) STATE SURVEY MARKS (SSM'S) - SHALL NOT BE DISTURBED UNLESS APPROVED BY THE COUNCIL ENGINEER.
- E) AT ALL LIGHT/POWER POLES, THE CONCRETE SHALL BE ENDED 150MM CLEAR OF THE POLE AND THE GAP FILLED WITH 30MM OF 10MM COLDMIX/ASPHALTIC CONCRETE.

10. NATURE STRIP RESTORATION

- A) MATCH EXISTING TURF.
- B) IF NEW TURF IS SPECIFIED, USE SOFT LEAF BUFFALO 'SHADEMASTER', LAID ON 100MM THICK PREPARED TOPSOIL, OR AS SPECIFIED BY THE COUNCIL ENGINEER.

11. SIGNAGE AND LINEMARKING

- A) ALL EXISTING SIGNAGE SHALL BE REINSTALLED UNLESS THE COUNCIL ENGINEER ADVISES OTHERWISE.
- B) SIGNS REPLACED OR NEW, WITHIN THE NEW CONCRETE SHALL BE INSTALLED WITH A V-LOK.
- C) SIGNAGE AND LINEMARKING SHALL COMPLY WITH NSW BICYCLE GUIDELINES, OR AS ADVISED BY COUNCIL.
- D) HERITAGE STREET NAME SIGNS EMBEDDED IN FOOTPATH PAVING AND KERBS - CAUTION SHALL BE EXERCISED TO NOT DAMAGE THESE SIGNS AND THE CONTRACTOR SHALL LIAISE WITH THE COUNCIL ENGINEER TO DETERMINE WHAT ACTION TO IMPLEMENT WHERE DISTURBANCE OF THE SIGN IS ESSENTIAL.

12. RESIDENT NOTIFICATION

- A) ALL RESIDENTS AFFECTED BY THE WORKS SHALL BE NOTIFIED AT LEAST 2 WORKING DAYS BEFORE THE RELEVANT WORK COMMENCES AND ANY REASONABLE REQUESTS ACCOMMODATED.

13. SAFETY/SIGNAGE/ACCESS

- A) DURING CONSTRUCTION, ADEQUATE WARNING SIGNS AND BARRICADING SHALL BE PROVIDED TO ENSURE THAT THE WORK SITE MEETS THE REQUIREMENTS OF AS 1742.2 & 1743.3, AND TO PROVIDE ADEQUATE PROTECTION TO PEDESTRIANS & MOTORISTS.
- B) ADEQUATE AND SAFE ACCESS FOR PEDESTRIANS SHALL BE PROVIDED AT ALL TIMES.
- C) AT DRIVEWAYS - PREVENTION OF ACCESS SHALL BE KEPT TO AN ABSOLUTE MINIMUM AND ARRANGEMENTS SHALL BE MADE WITH THE RESIDENT/BUSINESS, BY THE CONTRACTOR, FOR A SUITABLE DAY/TIME FOR THIS WORK. USE OF HIGHER STRENGTH CONCRETE, WITH SHORTER CURING TIME MAY BE NECESSARY.

14. DIMENSIONS

- A) ALL DIMENSIONS ARE IN MILLIMETRES UNLESS SHOWN OTHERWISE.

15. GENERAL

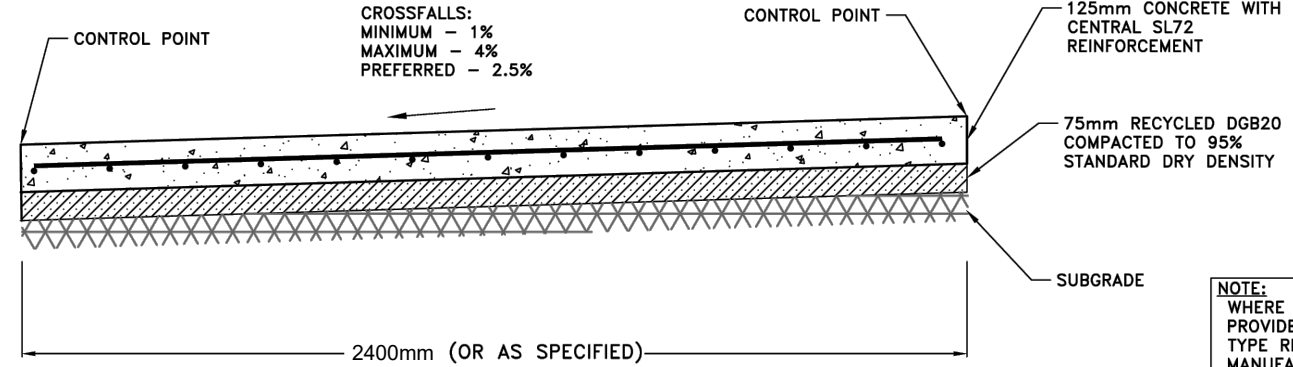
- A) ALL WORKS SHALL BE CARRIED OUT TO COUNCIL'S SPECIFICATION, TO BEST PRACTICE STANDARDS, AND TO THE SATISFACTION OF COUNCIL'S SUPERVISING ENGINEER.
- B) DURING AND AFTER EXCAVATION, ANY UNSOUND AREAS BELOW THE CONCRETE WORK SHALL BE DRAWN TO THE COUNCIL ENGINEER'S ATTENTION, TO ESTABLISH IF ANY ADDITIONAL EXCAVATION/ BASE COURSE IS NECESSARY.
- C) THE WORK SITE SHALL BE KEPT IN A CLEAN, TIDY, AND SAFE CONDITION AT ALL TIMES AND TO THE SATISFACTION OF COUNCIL'S ENGINEER.

16. DOCUMENT PRIORITY

- A) THIS PLAN SUPERSEDES ANY STATEMENTS ON OTHER DOCUMENTS, EG SPECIFICATIONS, OTHER PLANS, ETC, UNLESS ADVISED BY THE COUNCIL ENGINEER.

17. INSPECTIONS

- INSPECTIONS BY THE COUNCIL SUPERVISING ENGINEER SHALL BE REQUIRED AT THE FOLLOWING STAGES AND AS OTHERWISE DIRECTED BY THE COUNCIL ENGINEER:
 - A) EXCAVATION COMPLETED, ROAD BASE COMPACTED AND SUBGRADE PREPARED.
 - B) FORM WORK AND REINFORCEMENT SET.
 - C) CONCRETE POURED AND CURED.
 - D) COMPLETED.

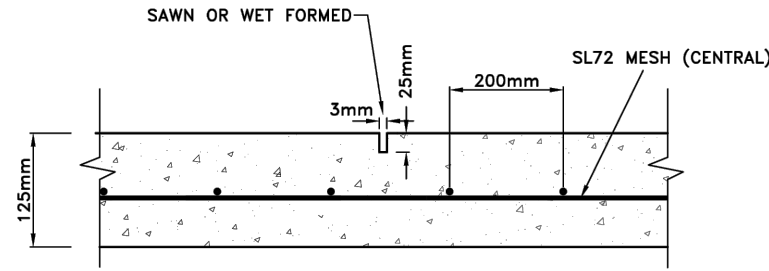


TYPICAL CYCLEWAY SECTION

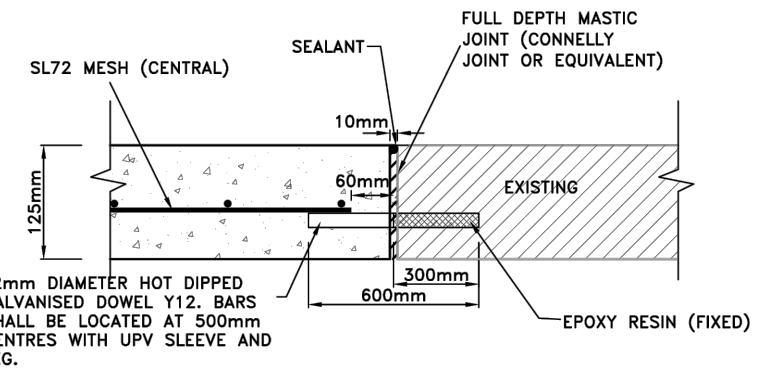
NOT TO SCALE

NOTE:
WHERE NEW TREES ARE INSTALLED - PROVIDE TREE ROOT BARRIER SURE GRO TYPE RB600H OR SIMILAR APPROVED TO MANUFACTURERS SPECIFICATION.

NB: EXPANSION JOINTS: CAN BE REPLACED WITH CONNELLY OR DANLEY EXPANSION JOINTS, OR APPROVED SIMILAR.



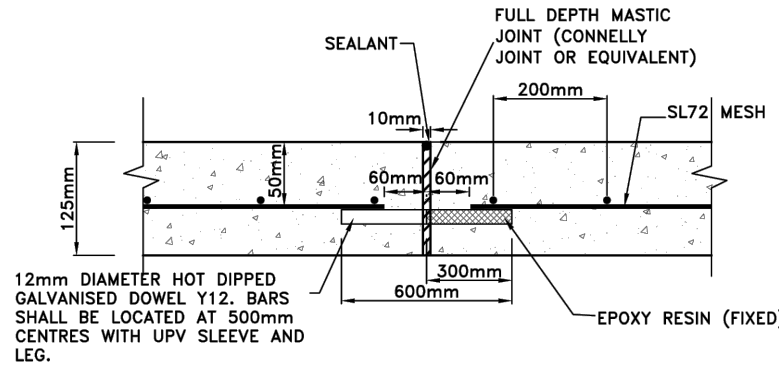
DUMMY JOINT (D.J)



EXPANSION JOINT B (E.J-B)

(FOR NEW TO EXISTING SLABS)

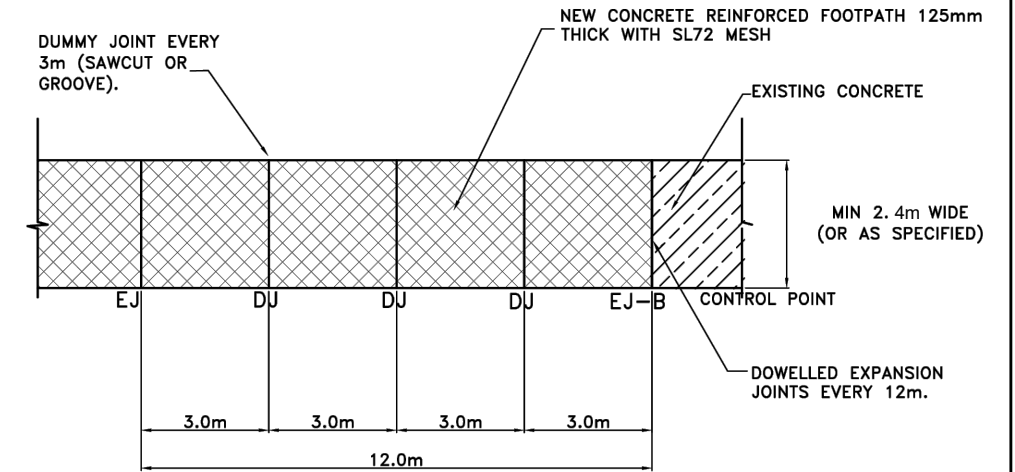
NOT TO SCALE



TYPICAL EXPANSION JOINT & DOWELLED (E.J.)

(FOR NEW TO NEW SLABS)

NOT TO SCALE

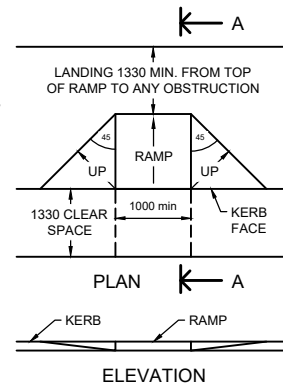


REINFORCED CONCRETE CYCLEWAY

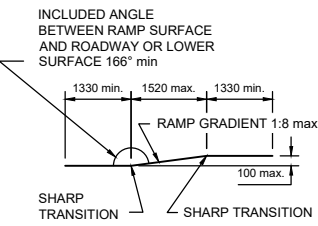
NOT TO SCALE

EJ - EXPANSION JOINT
DJ - CONSTRUCTION/DUMMY JOINT

ISSUED FOR INFORMATION



RAMP DETAIL



SECTION A-A

NOTE

DUMMY (CONTROL) JOINTS TO BE PLACED AT MAX 1.5 TIMES THE WIDTH OF FOOTPATH AND AT MAX 3.0m DISTANCE.

PROJECT TITLE
GOODDOOGA SHARED PATH

SHEET TITLE
PATH CONSTRUCTION DETAILS



BREWARRINA SHIRE COUNCIL
57 BATHURST STREET,
BREWARRINA
PH: 02 6830 5100
E: breshire@brewarrina.nsw.gov.au
NSW 2839

DESIGNED BY	AS	SHEET No.	REV
CHECKED BY	AS	GD06	
APPROVED & SIGNED	DAVID KIRBY		A

REV	DESCRIPTION	AS	10/24	DK
A	DRAFT - FOR REVIEW			